



istituto zooprofilattico sperimentale

del Piemonte, Liguria e Valle d'Aosta

CH1641-like: due casi di EST ovina con caratteristiche insolite

Dott.ssa **Barbara Iulini** -DVM

SC Neuroscienze - Lab. Neuropatologia

CEA - EURL TSE - C.Re.Di.Ma

Istituto Zooprofilattico Sperimentale del Piemonte Liguria e Valle
d'Aosta

Mail: barbara.iulini@izsto.it

Tel. 011-2686311-261



CASO 1

ANALISI IMMUNOISTOCHEMICA (IHC)

Campioni analizzati:

- Ovino 78813/19
- Controllo SCRAPIE classica ovina (ARQ/ARQ)
- Controllo BSE sperimentale ovina (os) *
- Controllo BSE sperimentale ovina (ic)*

* Campioni forniti da ISS

CASO 1

ANALISI IMMUNOISTOCHIMICA (IHC)

Anticorpi:



F99



P4



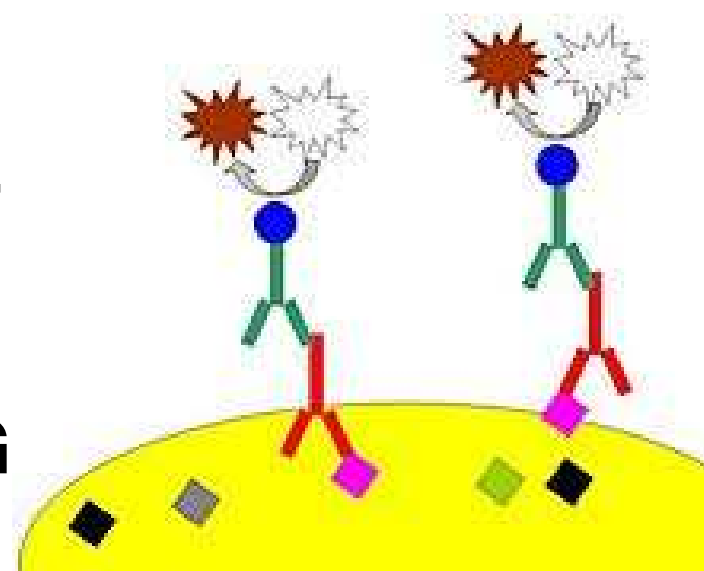
SAF84



8G

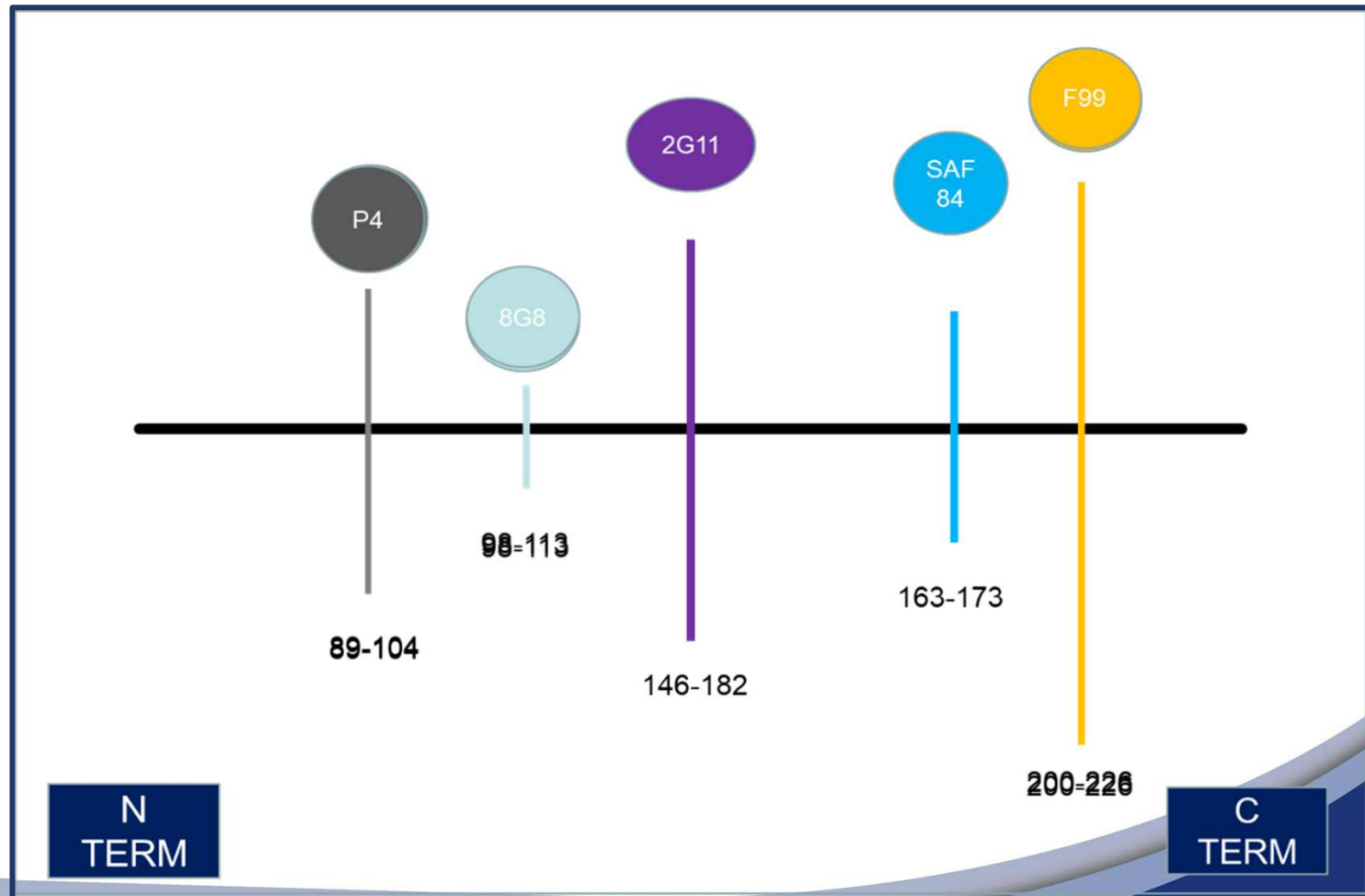


2G11



ANALISI IMMUNOISTOCHIMICA (IHC)

Pannello di anticorpi





CASO 1

Studio basato su 2 criteri:

- **MAPPATURA DELL'EPITOPO:** pattern PrPsc

→ intraneuronale

→ intraglinale

SCORE:

+: BASSA INTENSITA'

++: MODERATA INTENSITA'

+++: ELEVATA INTENSITA'



CASO 1

Studio basato su 2 criteri:

- **Studio della immunoreattività della PrPsc:**

→ extracellulare

→ intracellulare

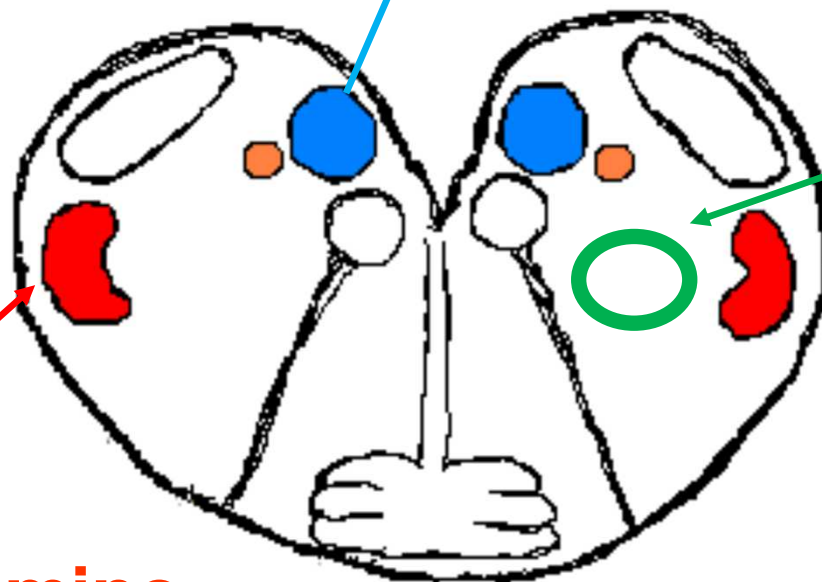
STUDIO DI 3 AREE
CON I DIVERSI
ANTICORPI

CASO 1

NUCLEO

Motore Dorsale Vago (DMNV)

**Sostanza
Reticolare**



NUCLEO

Tratto Spinale Trigemino



RISULTATI MAPPATURA DELL' EPITOPO

		F99	SAF84	2G11	P4	8G8
78813/1/1	Intraneuronal	+++	+++	++/+++	++*	++**
	Intraglial	+++	+++	++	++/+++	+/++
BSE sheep	Intraneuronal	+++	+++	+++	-	-
	Intraglial	++	+++	++	-/+	-
Classical scrapie	Intraneuronal	+	+	-/+	-/+	-/+
	Intraglial	+	+	-/+	-/+	-/+

*deposito intraneuronale localizzato esclusivamente nel Nucleo Dorsale del Vago (DMNV)

** deposito intraneuronale localizzato al DMNV e occasionalmente nella sostanza reticolare



CASO 1

RISULTATI

Studio della immunoreattività della PrPsc → Differenze

DISTRIBUZIONE

PATTERN

OVINO 78813/19

- Aggregati PrPsc
- Pattern gliale occasionale
- mAb 8G8 ha mostrato segnale

Controllo BSE ovina

- Assenza Aggregati PrPsc
- Pattern gliale
- mAb 8G8 negativo

Controllo Scrapie ovina

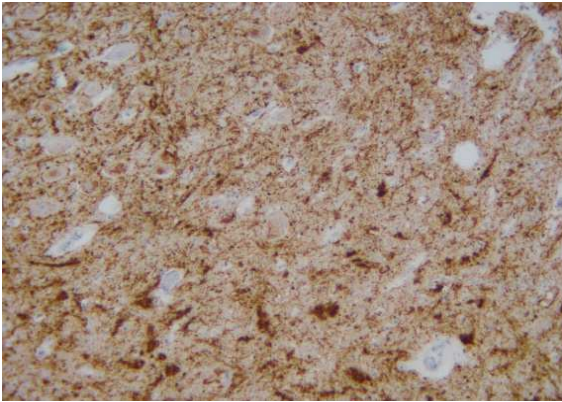
- Pattern gliale
- mAb 8G8 ha mostrato lieve segnale

CASO 1

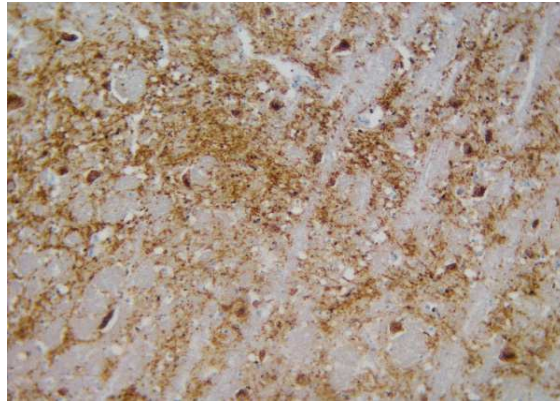
RISULTATI



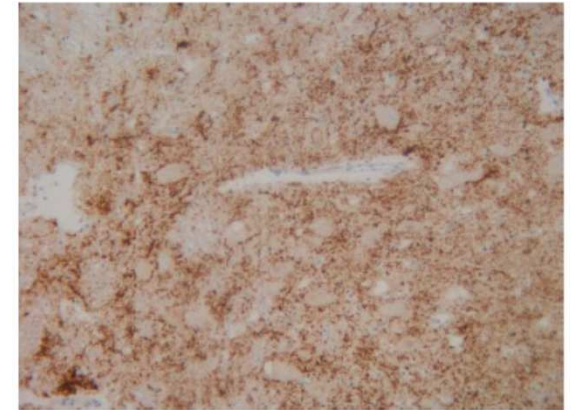
DMNV



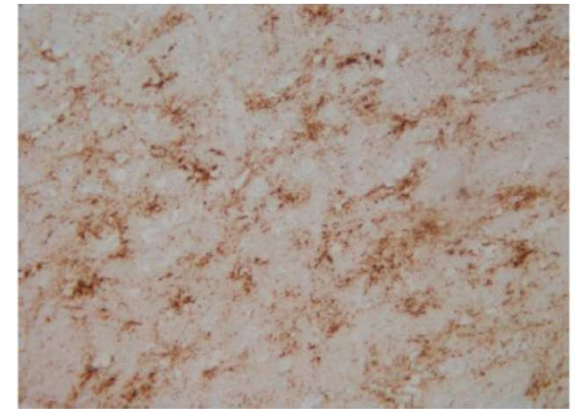
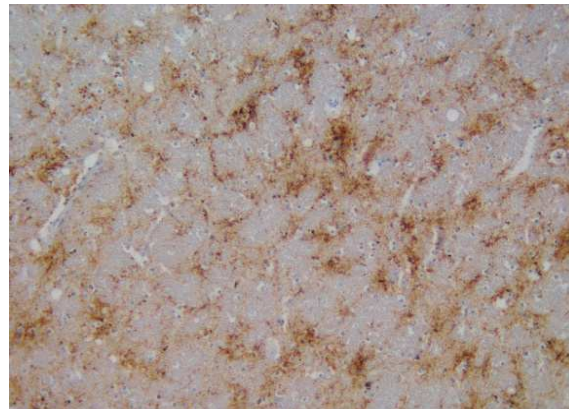
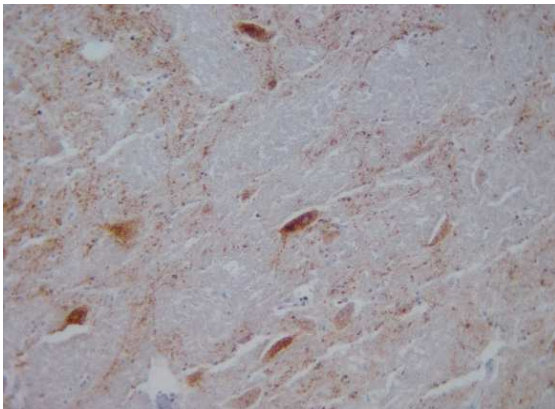
OVINO 78813/19



CONTROLLO BSE OVINA



CONTROLLO SCRAPIE
CLASSICA OVINA



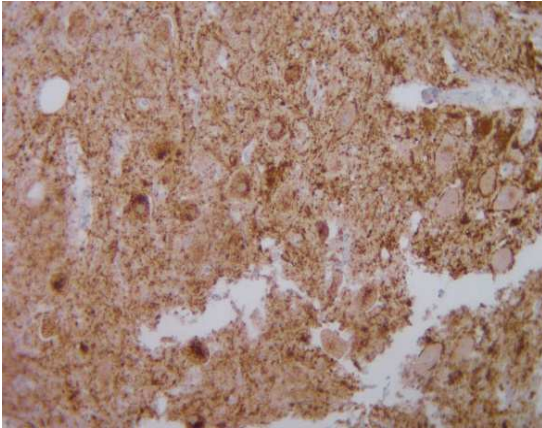
SOSTANZA RETICOLARE

CASO 1

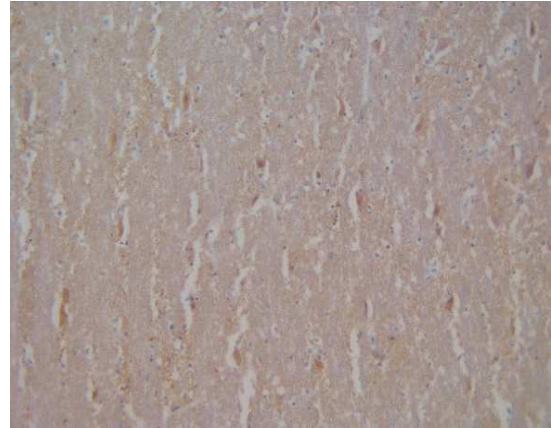
RISULTATI



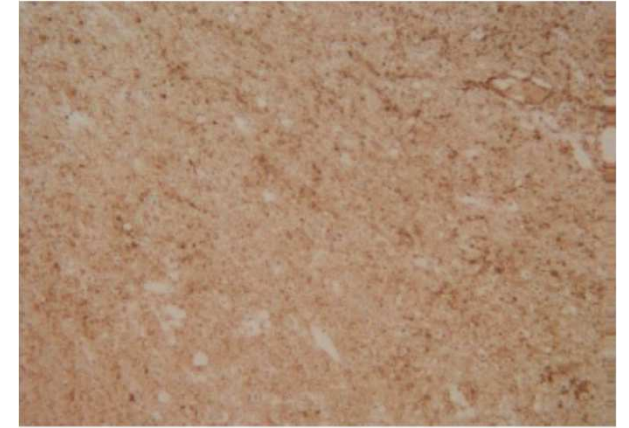
DMNV



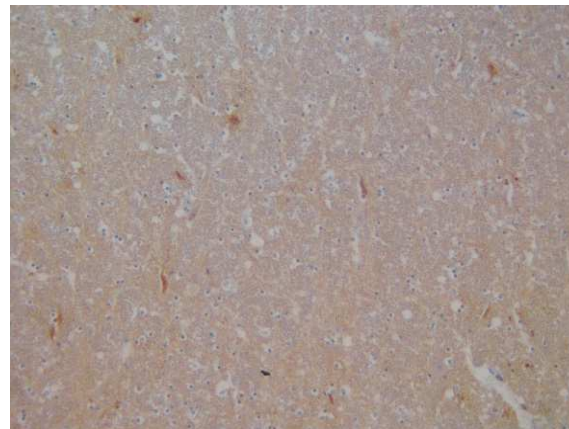
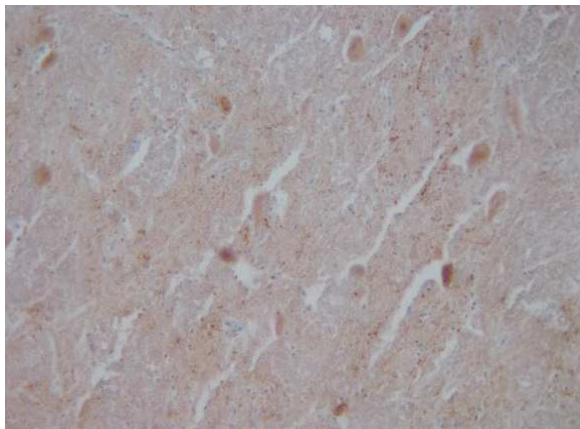
OVINO 78813/19



CONTROLLO BSE OVINA



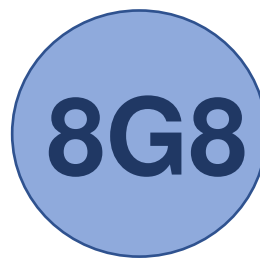
CONTROLLO SCRAPIE
CLASSICA OVINA



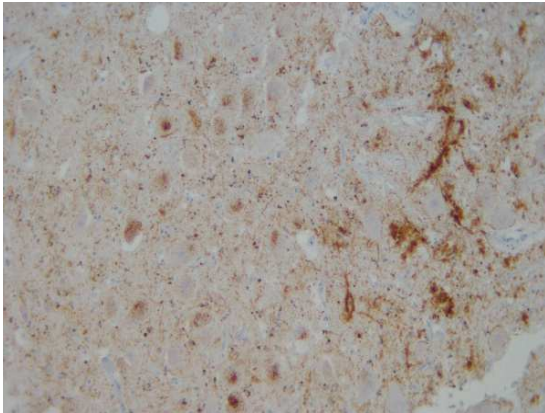
SOSTANZA RETICOLARE

CASO 1

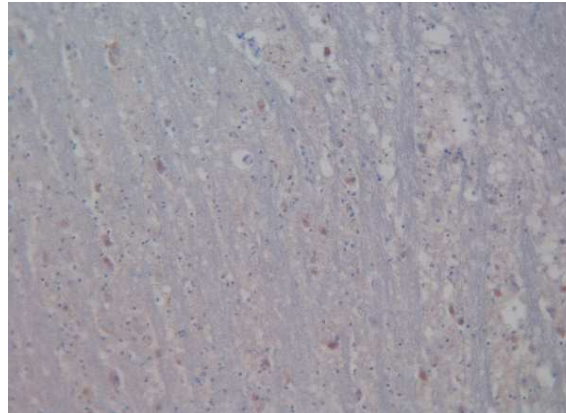
RISULTATI



DMNV



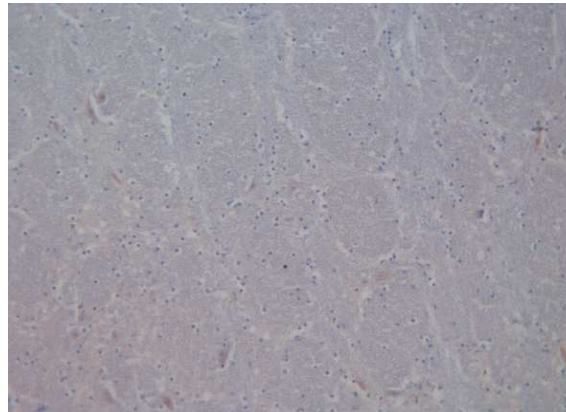
OVINO 78813/19



CONTROLLO BSE OVINA



CONTROLLO SCRAPIE
CLASSICA OVINA



SOSTANZA RETICOLARE



CASO 2

ANALISI IMMUNOISTOCHEMICA (IHC)

Campioni analizzati:

- CAMPIONE OVINO 60238/20
- Controllo di SCRAPIE classica ovina

Anticorpi:

➔ F99

➔ P4

➔ 2G11

➔ SAF84

➔ 8G8



CASO 2 RISULTATI

- Scarsa disponibilità di tessuto
- Assenza Nuclei Target

- SOSTANZA RETICOLARE del TRONCO ENCEFALICO
- MIDOLLO

OVINO 60238/20:

- ✓ Pattern diverso dal controllo SCRAPIE classico
- ✓ Pattern differente dalla BSE negli ovini (dati non pubblicati)



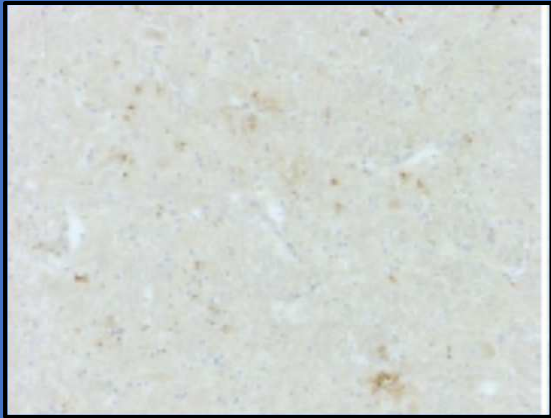
CASO 2

RISULTATI

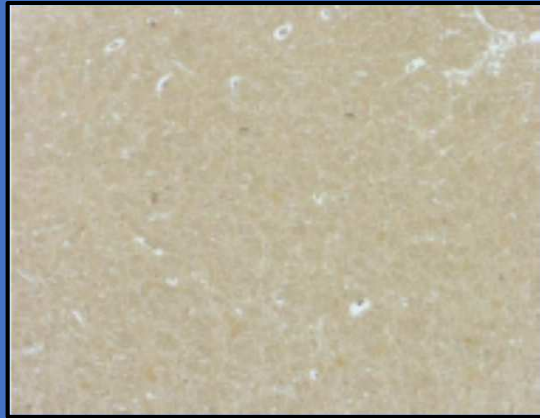


SOSTANZA RETICOLARE

OVINO 60238/20



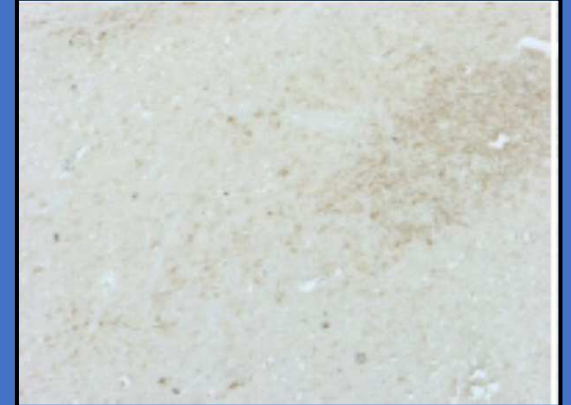
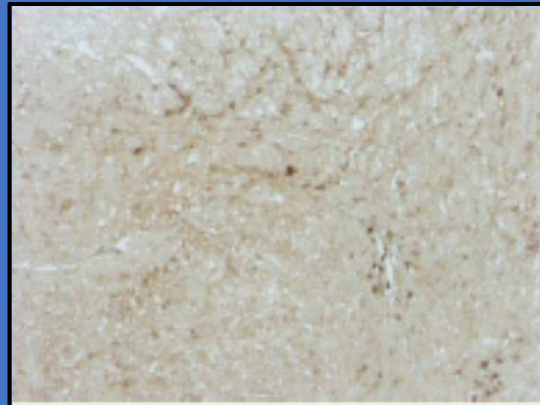
F99



P4



8G8



CONTROLLO SCRAPIE CLASSICA OVINA